



INSTALLATION INSTRUCTIONS

**PART NUMBER: DCH15-100 GRILLE GUARD
DCH15-PB PUSH PAR**

APPLICATION: 2015+ DODGE CHARGER AWD/2WD

QTY	PARTS LIST
1	DCH15-100TVI/PB
8	½" x 1 ½" HEX HEAD BOLTS
2	½" HEX NUTS
10	½" FLAT WASHERS
8	½" LOCK WASHERS
2	7/16" x 4" GR. 5 HEX HEAD BOLTS (2WD)
2	7/16" x 4" GR. 5 PRE-BENT HEX HEAD BOLTS (AWD)
4	7/16" x 4" GR. 8 HEX HEAD BOLTS
6	7/16" NYLON LOCK NUTS
12	7/16" FLAT WASHERS
1	DCH15-100 UPPER LEFT BRACKET
1	DCH15-100 UPPER RIGHT BRACKET
2	DCH15-100 BACKING PLATES
1	DCH15-100 LOWER MOUNT SKID PAN

**Inspect bumper and all parts prior to installation.

-WARNING-

Special care should be exercised in the handling and installation of our products.

- Always wear safety glasses during installation process to avoid personal injury.
- Use extreme caution when lifting and securing product into place.
- Never position yourself directly under product during installation.
- Insulate all exposed wiring and electrical connectors.
- Always securely mount wiring harness to bumper and vehicle.
- Products may require minor trimming for proper fit.
- Periodically check nuts and bolts to make sure they remain tight.

2015+ Dodge Charger Grille Guard / Push Bar Installation Instructions

1. Open the hood, unplug and remove the 12 push pins that secure the bumper support, and the two screws that secure the bumper to the fender.



2. Underneath the vehicle, remove the 6 screws that secure the bottom of the bumper to the plastic splash pan.



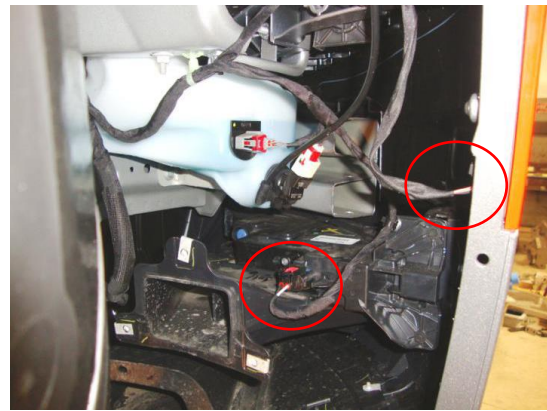
3. On each side, remove the three screws that secure the brake cooling duct to the fender well.



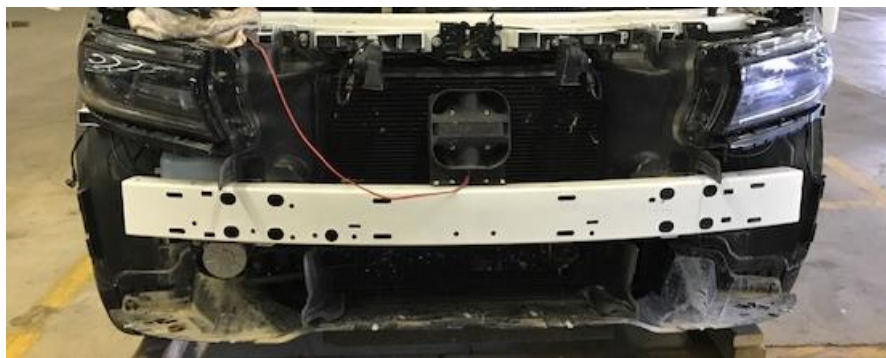
- On each side, remove the (11) push pins that secure the front section of the fender well to the fender panel and front bumper.



- On each side, pull back the front section of the fender well and remove the (2) bolts that secure the front bumper to the fender. Disconnect the turn signal wiring harness and fog lights, if equipped.



- Gently pull on the sides of the front bumper to remove and set it aside.



7. Starting from each end of the bumper, measure 16 ¾" and 19" towards the center & mark. Mark 2 ¼" down from the top of the bumper. Drill 4 - ½" holes at these locations.



8. Mount, the provided, upper brackets and the backing plates to the holes that were drilled, using the 7/16" Grade 8 hardware. Place the ThunderStruck Grille Guard onto the mounts to ensure that all the bolt holes line up with the bracket holes (adjust brackets as needed). Once aligned, place the ThunderStruck Guard aside for later installation. Securely tighten all bolts connecting the upper brackets to the bumper support. (These will not be accessible once the bumper cover is reinstalled).



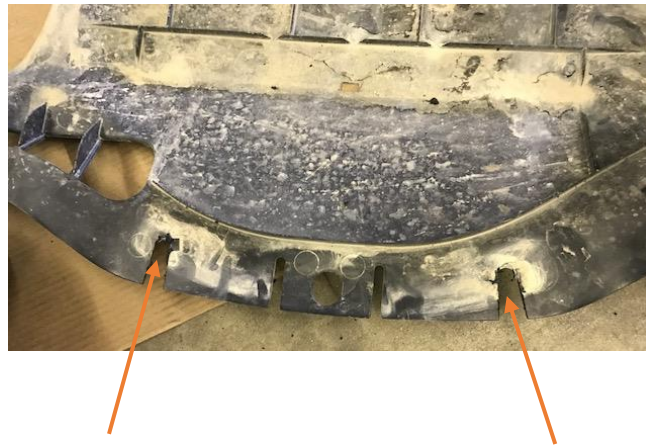
Backing Plate



9. Remove the front and rear splash shields (as shown in the picture). Cut the front and rear splash shield where it attaches to the crossmember. A cut off wheel or tin snips work well for this.



10. Notch the rear splash shield at the indicated holes, as shown.



11. Remove the Dodge logo from the factory grille and notch the grille for brackets to be able to pass through.



12. Reinstall the front bumper and the splash shields, reusing factory bolts.

12. Attach the rear of the provided Lower Mount to the vehicle crossmember using:
(AWD) - Pre-Bent 7/16" x 4" Grade 5 Bolts or **(2WD) - 7/16" x 4" Grade 5 Bolts** along with the provided 7/16" hardware.
Bolts should be placed from the bottom up.



4" x 7/16" Gr. Pre-Bent Bolt (AWD)

13. Mount the ThunderStruck Grille Guard to the brackets that were previously mounted, using the provided 1/2" hardware.

14. Align, Adjust, and Tighten all bolts.

